

Lamina S-Pro EOCT series



INTRODUCTION

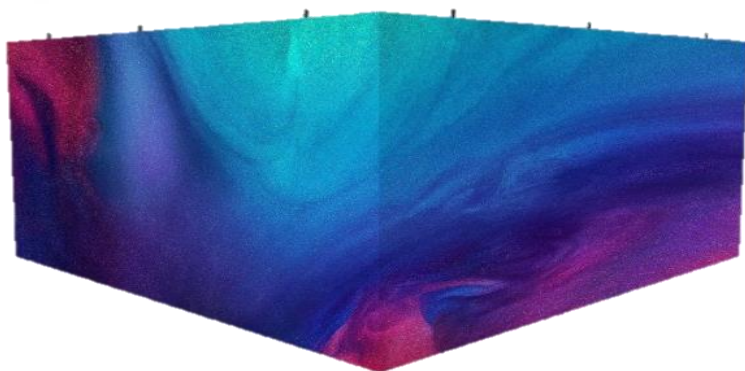
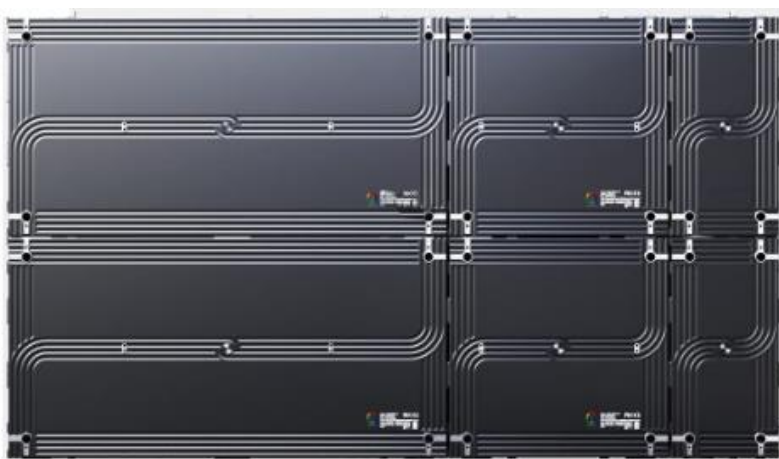
For top-tier visual performance and value, the second generation of the Lamina's series boasts feature-rich professional functionalities tailored for meeting rooms and signage applications in a regular X250mm steps design acclaimed by architects and designer.



Lamina S-Pro EOCT series



SLIM DESIGN



CREATIVE DESIGN

90 degree design,
Seamless right-angle
installation



X250MM. RATIO DESIGN

The Unitech Digital Media Lamina S Msx, with a X250mm. Design ratio panel, native wireless and local connectivity, and rapid input detection, captivates corporate users for its simplicity. Aimed and acclaimed by Architects that prefer the cabinet dimension multiple of 250mm, make simpler the continuous

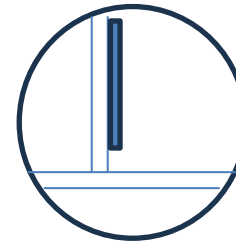
AVAILABLE CABINETS SIZE

1000*500*33mm
500*500*33mm
250*500*33mm
1000*250*33mm
500*250*33mm
250*250*33mm

Lamina S-Pro EOCT series



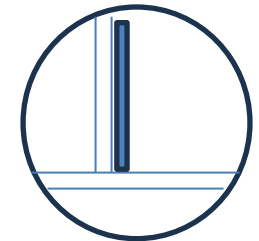
MULTIPLE INSTALLATION STYLE



Wall mounting



Truss Rigging



Ground Rigging

Experience super thin panels , front service access and EOCT strong led surface protection that ensure durability and clean proof surface.

Easy installation over wall, stand alone, ground rigging, truss rigging

Weight reduced to the essential, thin as no one, for stilish , sleek design.

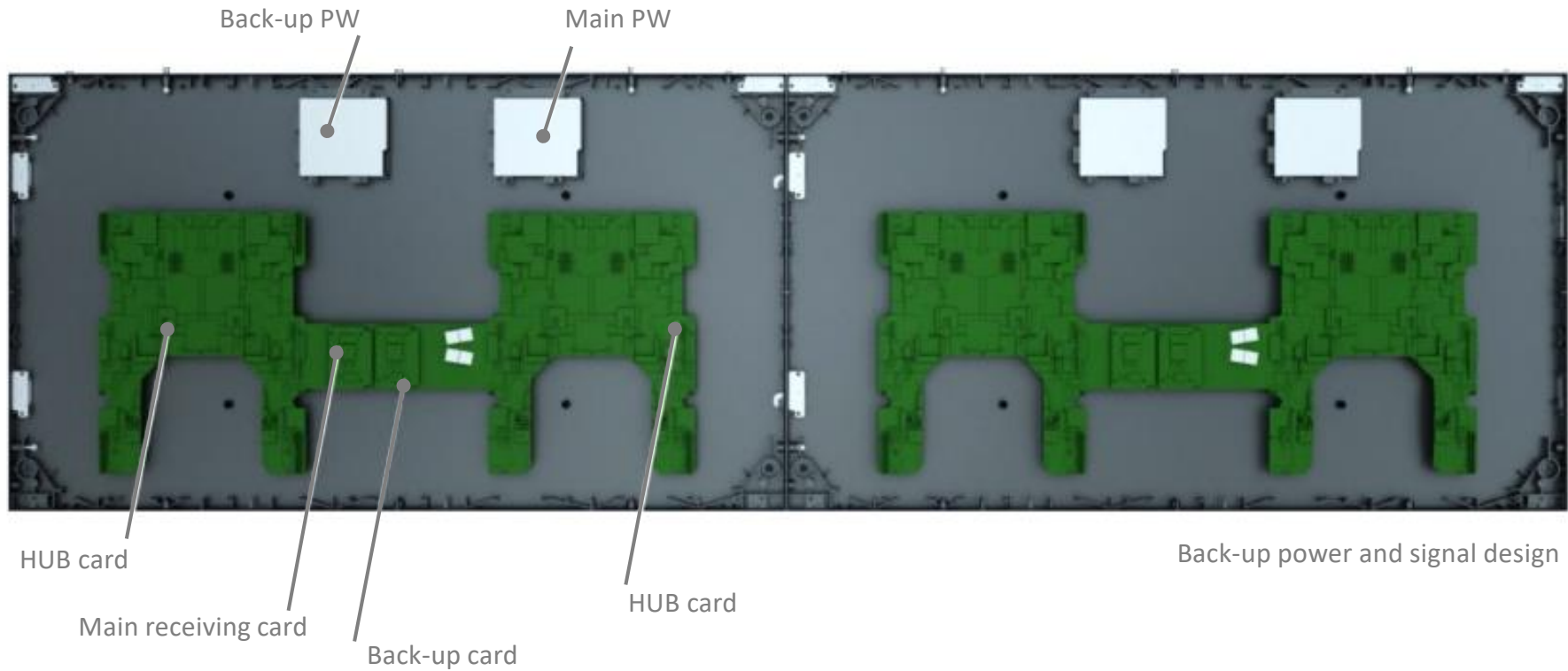
Avialable the side frame to complete the high tech clean design.

.

Lamina S-Pro EOCT series



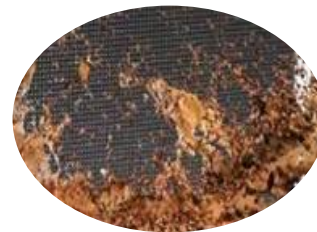
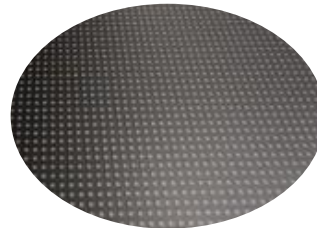
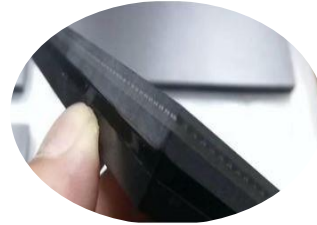
POWER & SIGNAL REDUNDANCY



Lamina S-Pro EOCT series



EOCT EPOXI OPTICAL COTING TECHNOLOGY



TECHNOLOGY

EOCT is a new technology, an innovative sealing on the surface of led's modules using an optical degree epoxy sealant: a great protection from water, dust and damage for leds pixels. over increasing contrast and view angle.

WATERPROOF, SHOCK AND DUST PROOF

EOCT Compared with traditional SMD, it is characterized by high protection, over moisture, waterproofing, anti-collision and moderated anti-UV protection.

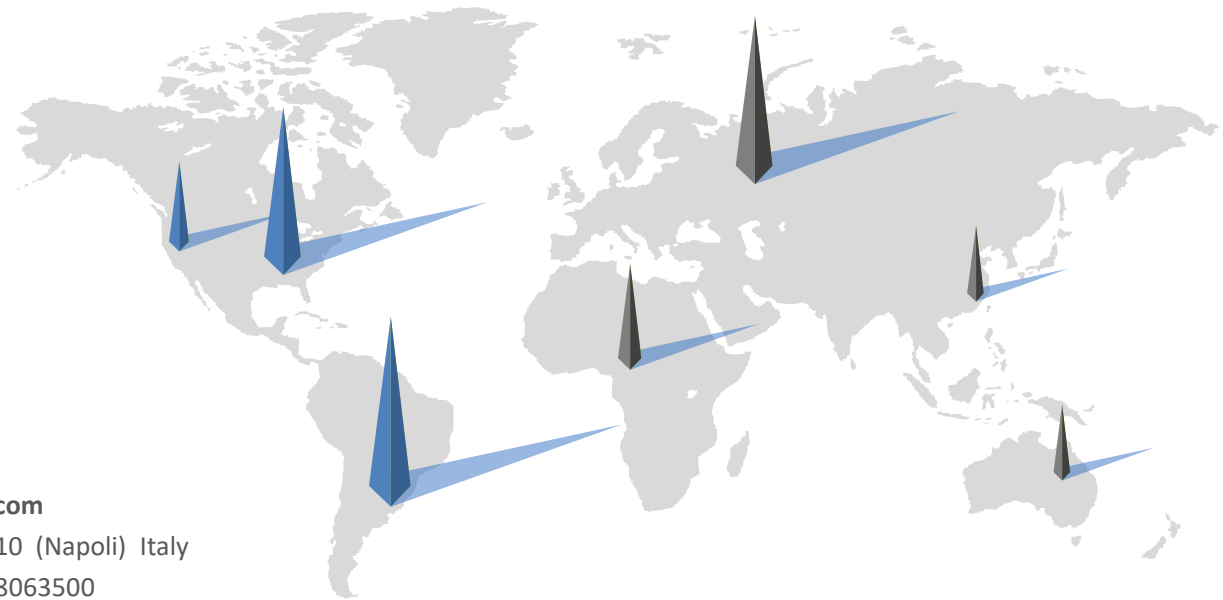
WIDER ANGLE VIEW, IMPROVED PIXEL-FREE VISION

Compared to GOB technology, it features easier maintenance and lower cost, wider viewing angle (178°)

Lamina S-Pro EOCT series



Order Code	LMNSpro 1.9 EOCT	LMNSpro 2.6 EOCT
LED Type	SMD1212	SMD 1515
Pixel Pitch	1.9mm	2.6mm
Pixel Density	262,144 dot/m	147,456 dot/m
Module Resolution	128*128px	96*96px
Module Size	250*250mm	250*250mm
Module weight	0,5 Kg	0,5 Kg
Modula Thicknees	3mm	3mm
Average Module Power consumption	28 W	28 W
Drive Mode	Constant current	Constant current
Vertical Viewing Angle	140°	140°
Horizontal Viewing Angle	178°	178°
Brightness	1000cd/mq	1000cd/mq
Grey Scale	15 bit	15 bit
Refresh Rate	≥3840 HZ	≥3840 HZ
Max Power consumption	435W W/mq	400W W/mq
Average Power consumption	130W W/mq	120W W/mq
Cabinet Size	1000*500*33mm 500*500*33mm 250*500*33mm	1000*250*33mm 500*250*33mm 250*250*33mm
Cabinet Weight	11,7 Kg	11,7 Kg
Cabinet Thickness	28,5mm	28,5mm
Contrast	100.000/1	
Dynamic range	SDR /HDR	
Input Voltage	110-220V/200-240V	
Working Temperature	-20~+40°C	
Storage Temperature	-40~+80°C	
Operation humidity	10%~90%RH	
Level of Protection	IP20	
Installation Method	Front service	
Certificates	CE (EMC A, LVD) , FCC, ETL	
Surface Protection.	EOCT	
EOCT Performance	DIN 55996-1	
Fireproofing Level	V0	
Service	24x7 Operation	



Head office

E-mail : info@unitechdigitalmedia.com

Add : Corso Italia 431A, Quarto 80010 (Napoli) Italy

Tel : +39 - 335-8010444 | +39 - 081-8063500

WEB: <https://unitechdigitalmedia.it>

<https://www.unitech.lighting>