

Zx pro series Indoor & Outdoor Led Display



# Zx pro series



## FEATURES

- Magnetic panel system
- Modular and Linear design
- High efficient heat dissipation
- Support 90° seamless splicing
- Quick installation with one man
- Curve scree available, support concave & convex installation
- Hanging & Stacking installation
- Front & Rear maintenance

Applications: Stage, Conferences, Expo, Events, Concert, etc



Easy Installation



Super-Light



Modular



Wide View Angle

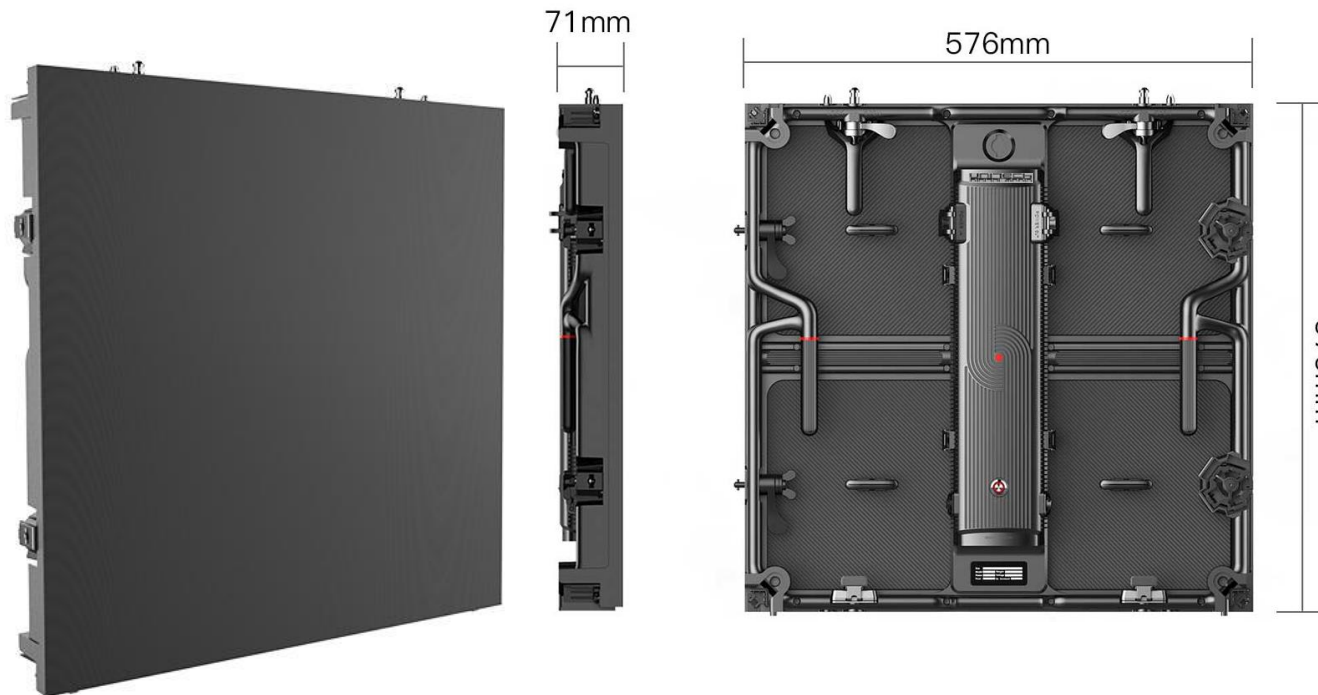


Mixed batch



Dazzle Colors

# Zx pro series



### LED DISPLAY Zx pro series

**SIZE:** 576\*576\*71mm

**ORDER CODE:** UNIZXPROi 2.9

### LED DISPLAY Zx pro series

**SIZE:** 576\*576\*71mm

**ORDER CODE:** UNIZXPROi 3.8

### LED DISPLAY Zx pro series

**SIZE:** 576\*576\*71mm

**ORDER CODE:** UNIZXPROi 4.8

### LED DISPLAY Zx pro series

**SIZE:** 576\*576\*71mm

**ORDER CODE:** UNIZXPROo 3.8

### LED DISPLAY Zx pro series

**SIZE:** 576\*576\*71mm

**ORDER CODE:** UNIZXPROo 4.8

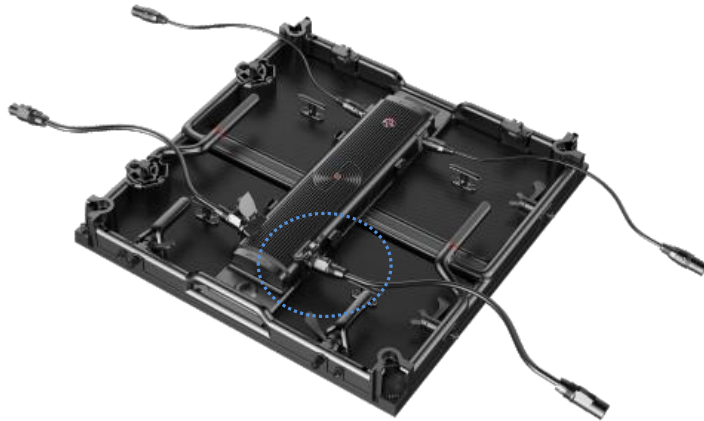
# Zx pro series



## SIGNAL BACKUP

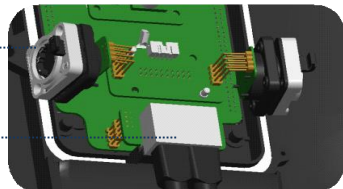
Air-plug and RJ45 port work separately

Two port are wireless design can decrease the failure rate.



Air plug

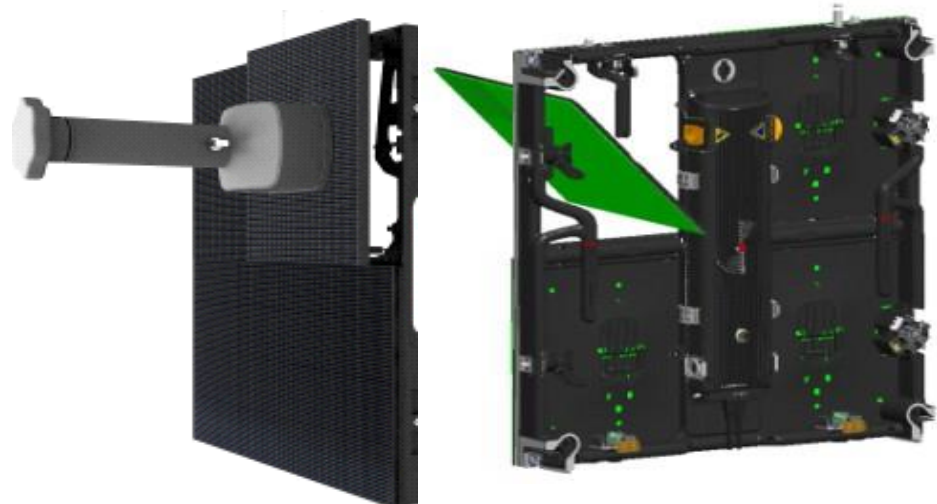
RJ45 Backup



## MAINTENANCE

Indoor Module support Front & Rear Access

Outdoor Module clip design (no screws), support rear access



Front Access

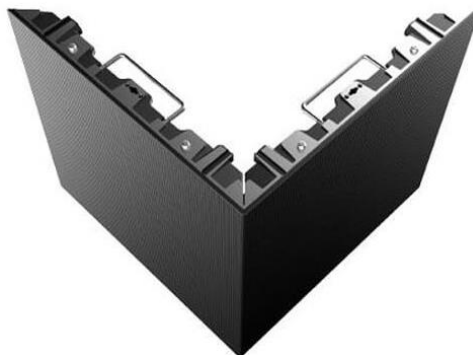
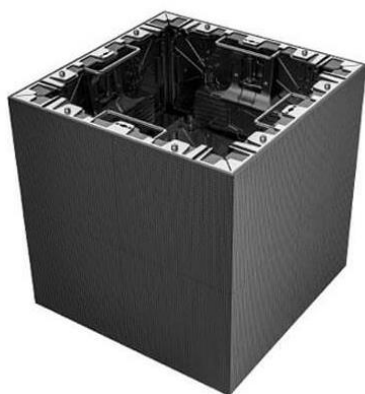
Rear Access



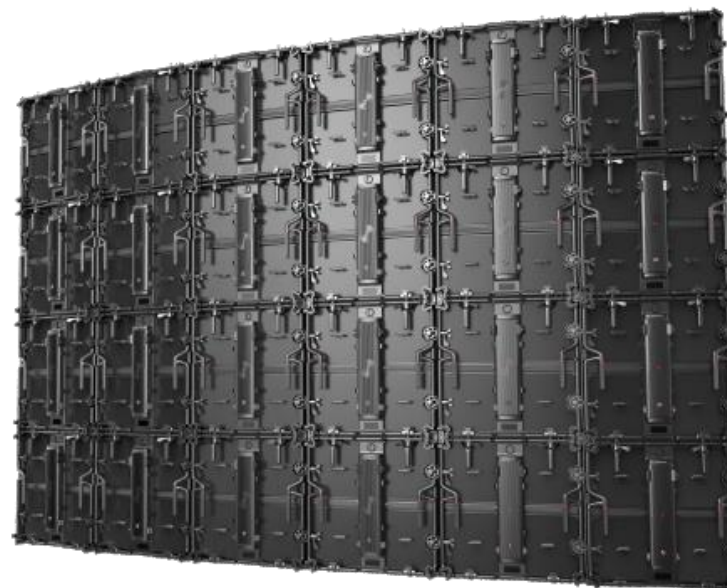
# Zx pro series



## INSTALLATION



Multi-angle, perfectly support 90° | concave & convex



Concave : 0 1 2 3 6 10°

Convex: 0 1 2 3 6° (MAX)





# Zx pro series



	<b>Zx pro i 2.9</b>	<b>Zx pro i 3.8</b>	<b>Zx pro i 4.8</b>	<b>Zx pro o 3.8</b>	<b>Zx pro o 4.8</b>
LED	SMD2121	SMD2121	SMD2121	SMD1921	SMD1921
Pixel Pitch	2.59 mm	3.8 mm	4.8 mm	3.8 mm	4.8 mm
Pixel Density	118164	67816	43402	67816	43402
Module Resolution	99*99 dots	75*75 dots	60*60 dots	75*75 dots	60*60 dots
Module Size	288*288 mm	288*288 mm	288*288 mm	288*288 mm	288*288 mm
Cabinet Size	576*576*71 mm	576*576*71 mm	576*576*71 mm	576*576*71 mm	576*576*71 mm
Cabinet Weight	8,5 Kg/pcs	8,5 Kg/pcs	8,5 Kg/pcs	9 Kg/pcs	9 Kg/pcs
Cabinet Thickness	75 mm	75 mm	75 mm	75 mm	75 mm
Brightness	1000cd/mq	1000cd/mq	1000cd/mq	3000cd/mq (black led) 4500cd/mq (white led)	3000cd/mq (black led) 4500cd/mq (white led)
Max Power Consumption	165 W	160 W	160 W	220 W	220 W
Avg Power Consumption	68 W	65 W	65 W	90 W	90 W
Visual View angle	160°/140°				
Operating Power Source	100-240V AC 50-60Hz				
Operating Temperature	-20°C / +40°C				
Refresh Rate	<3840 HZ				
Protecting Rating	IP20			IP65	
Signal Input Source	S-video, VGA, DVI, HDMI, SDI				
Certificate	CE, FC, ETL, EMC				



### Head office

E-mail : [info@unitechdigitalmedia.com](mailto:info@unitechdigitalmedia.com)

Add : Corso Italia 431A, Quarto 80010 (Napoli) Italy

Tel : +39 - 335-8010444 | +39 - 081-8063500

WEB: <https://unitechdigitalmedia.it>

<https://www.unitech.lighting>



### Doha Commercial Representative

Contact : Renato Febbraio

E-mail : [Renato@unitechdigitalmedia.com](mailto:Renato@unitechdigitalmedia.com)

Add : P.O. Box 30084 Doha Qatar

Tel: + 974 4441 7005 | +974 5018 8831 | +974 3303 6348

