

Artnet Led Controller



Artnet Controller

FEATURES

- converts Art-Net data from Ethernet network to DmX512.
- Family Artnet Controller has 2universes (A2), 4universes (A4), 8 universes (A8) and 16 universes (A16) available.
- Perfect synchronization between each universe.
- offers powerful features, especially in combination with software.
- Take full advantage of pixel mapping and voxel mapping, easy to install.
- The device is ready within seconds after start-up. An HTP merge is automatically available for two Art-Net sources.
- It's possible to access and change specific device settings using the built-in web configuration tool.

A2

Artnet controller



A4

Artnet controller



A8

Artnet controller



A16

Artnet controller



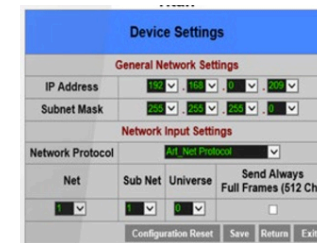
SPECIFICATIONS

	A2	A4	A8	A16
Power Input	100-240VAc 50/60Hz	100-240VAc 50/60Hz	100-240VAc 50/60Hz	100-240VAc 50/60Hz
Input Protocol	ARTNET	ARTNET	ARTNET	ARTNET
Output Protocol	DMX512	DMX512	DMX512	DMX512
Refresh Rate	40Fps	40Fps	40Fps	40Fps
Default IP	192.168.1.100	192.168.1.100	192.168.1.100	192.168.1.100
Default Subnet	255.255.255.0	255.255.255.0	255.255.255.0	255.255.255.0
Cable	Net cable	Net cable	Net cable	Net cable
DMX512(Out)	2x512 Channels	4x512 Channels	8x512 Channels	16x512 Channels
Ethernet Port	RJ45	RJ45	RJ45	RJ45
DMX512 Ports	3 Pin/5 Pin XLR Female	3 Pin/5 Pin XLR Female	3 Pin/5 Pin XLR Female	3 Pin/5 Pin XLR Female
Housing	Silver Metal	Black Metal	Black Metal	Black Metal
IP	IP20	IP20	IP20	IP20
Dimension	115x63x38 mm	117.6x92.8x38 mm	440x136.6x44 mm	440x136.6x44 mm
Dimension	140x63x38 mm	137.6x92.8x38 mm	483x136.6x44 mm	483x136.6x44 mm
Certificate	CE	CE	CE	CE

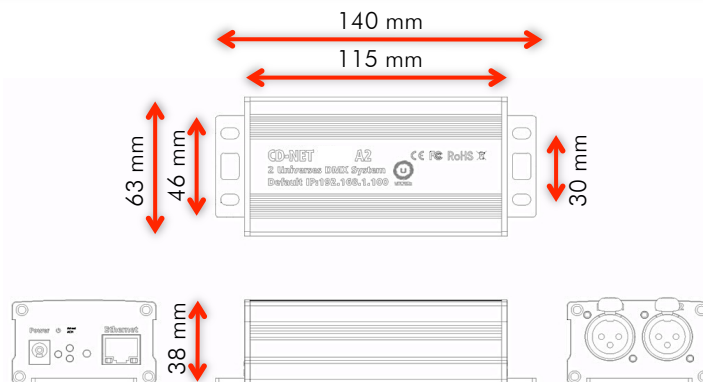
WEB CONFIGURATION

It's possible to access various settings and information by using a web configuration interface:

- Connect your computer to the same network.
- Open your web browser and enter the IP address of A2/A4/A8/A16.
- The web configuration interface will be launched.



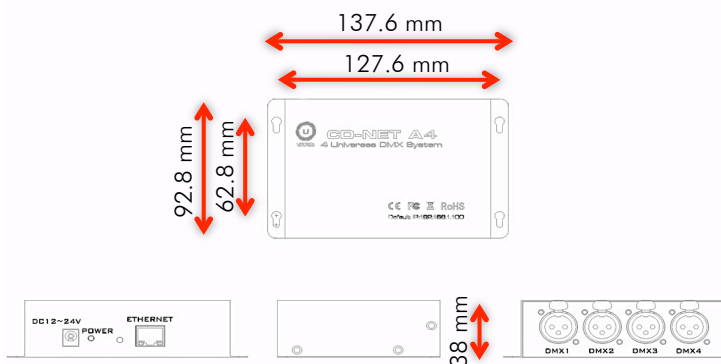
Artnet Controller



A2 ARTNET CONTROLLER

SIZE: 5.51"x2.48"x1.49" (140x63x38mm)

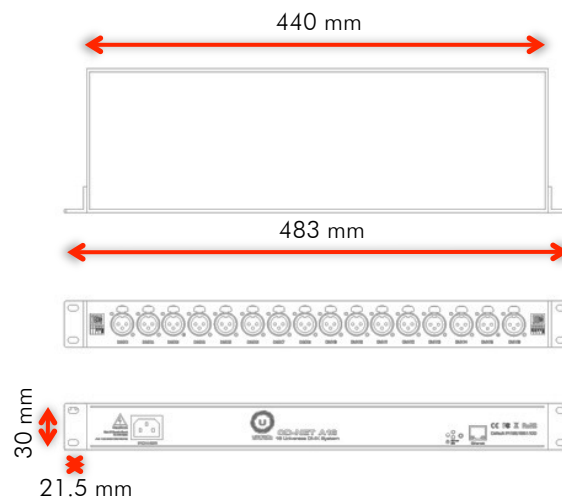
ORDER CODE: UNILCA2



A4 ARTNET CONTROLLER

SIZE: 5.41"x3.66"x1.49" (137.6x92.8x38mm)

ORDER CODE: UNILCA4



A8 ARTNET CONTROLLER

SIZE: 19.01"x5.37"x1.73" (483x136.6x44mm)

ORDER CODE: UNILCA8

A16 ARTNET CONTROLLER

SIZE: 19.01"x5.37"x1.73" (483x136.6x44mm)

ORDER CODE: UNILCA16

