

DMX Setup Tool

Led Controller



DMX setup tool

FEATURES

- CD-WT01 is a professional DMX address writer with extra powerful functions. It's convenient for customers to set DMX address, set DMX decoder and test led lights.
- There are five buttons including UP, OK, DOWN, ON/OFF, MODE in the surface.
- User can set DMX address by pressing UP, DOWN and OK.
- User can set DMX address offset auto increment according to led light channels.
- User can set DMX decoder DX512I and DX512m.
- User can test led color with CD-WT01 after installation.
- Standard DMX 512 control protocol (max 40frames/second).
- Powered by battery or USB for easy carry.



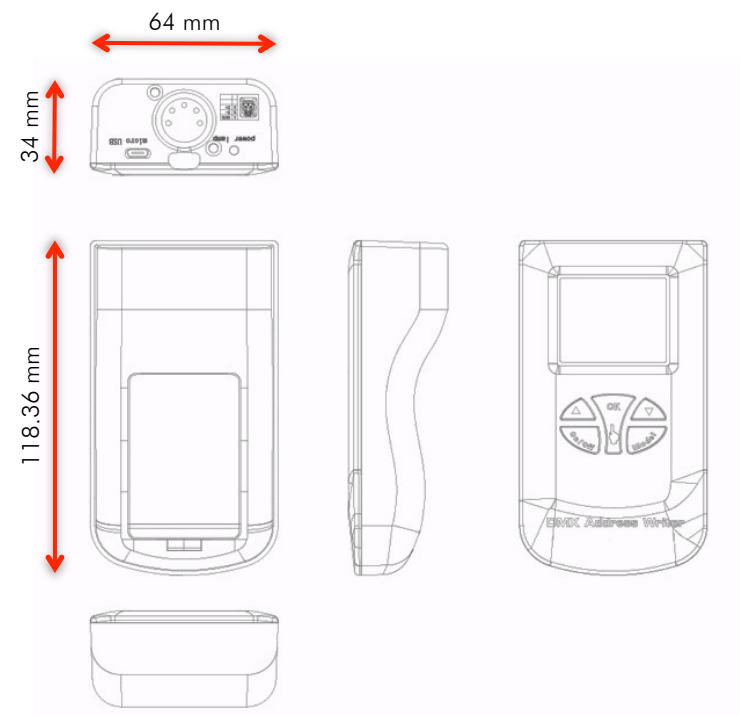
BACK VIEW



FRONT VIEW

SPECIFICATIONS

	CD-WT01	
Supply Voltage	Dc5V	
Power Requirement	USB	
Control	DMX512	
DMX Channels	512 Channels	
Data output	XLR 5 Pin	
Address Setting	Manually	
Main Function	Set Address/Set DMX Decoder/Test LED Color	
USB Connection	Micro USB	
Housing	Black Plastic	
Dimension	122x62x32	
Operation Temperature	-20° to 60°C	
Storage Temperature	-40° to 80°C	
Protection Rating	IP20	
Certificate	CE	



CD-WT01 DMX SETUP TOOL

SIZE: 4.80"x2.44"x1.25" (122x62x32 mm)

ORDER CODE: UNILCWT01