

# Flex+ SERIES

CREATIVE LED SCREEN SOLUTION

# CONTENTS

A

**Analysis**

B

**Field of Application**

C

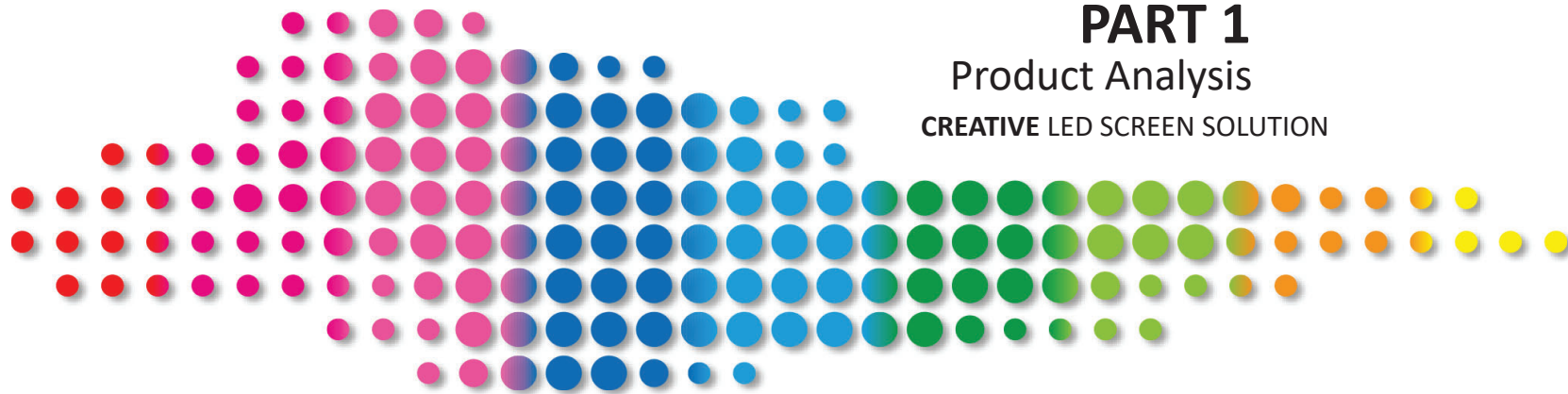
**Features**

1. Design
2. Performance
3. Structure

D

**Specification**

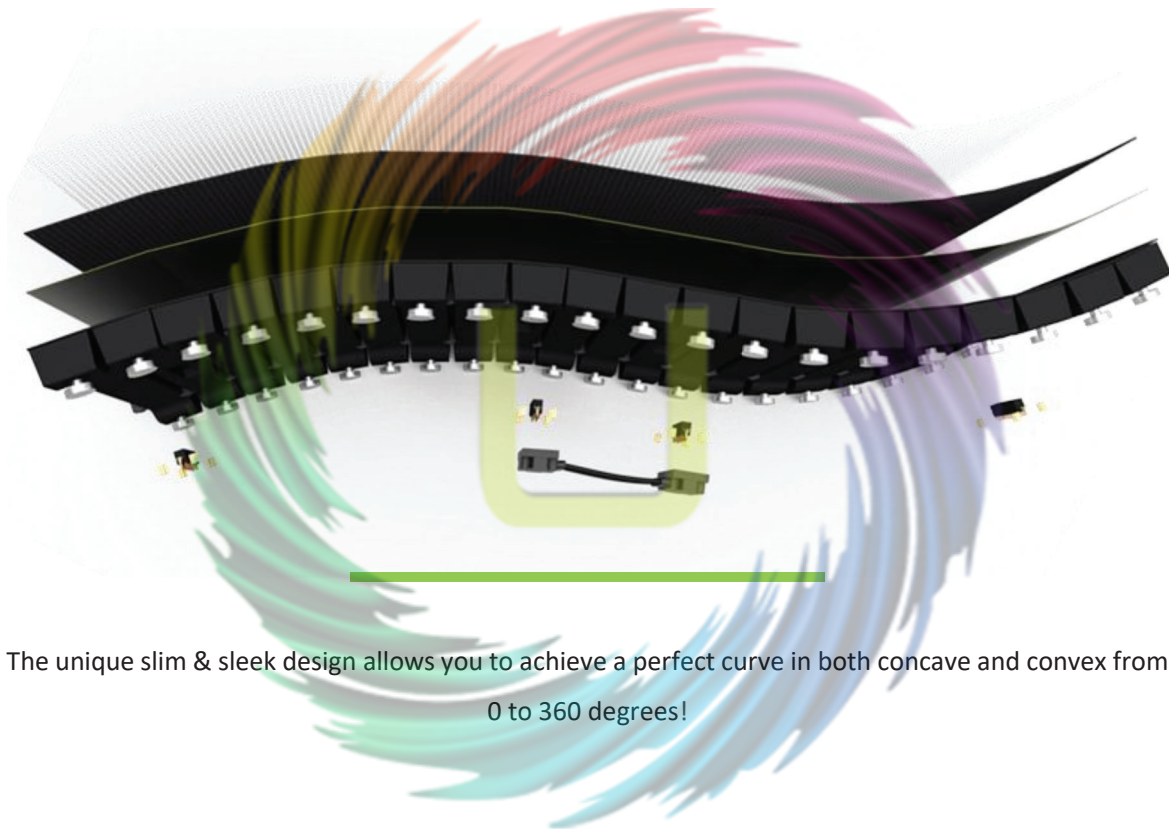
unitech  
digitalmedia



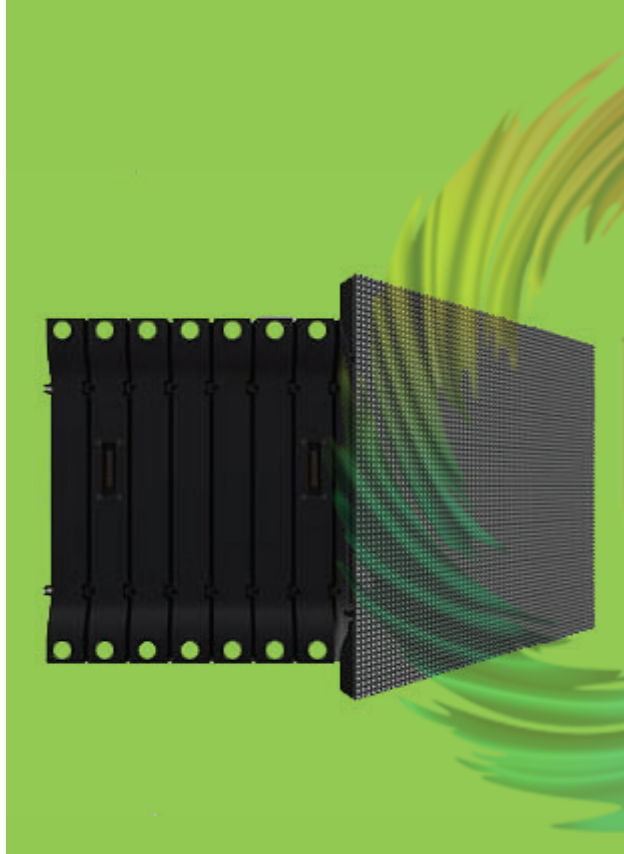
# PART 1

## Product Analysis

CREATIVE LED SCREEN SOLUTION



The unique slim & sleek design allows you to achieve a perfect curve in both concave and convex from 0 to 360 degrees!



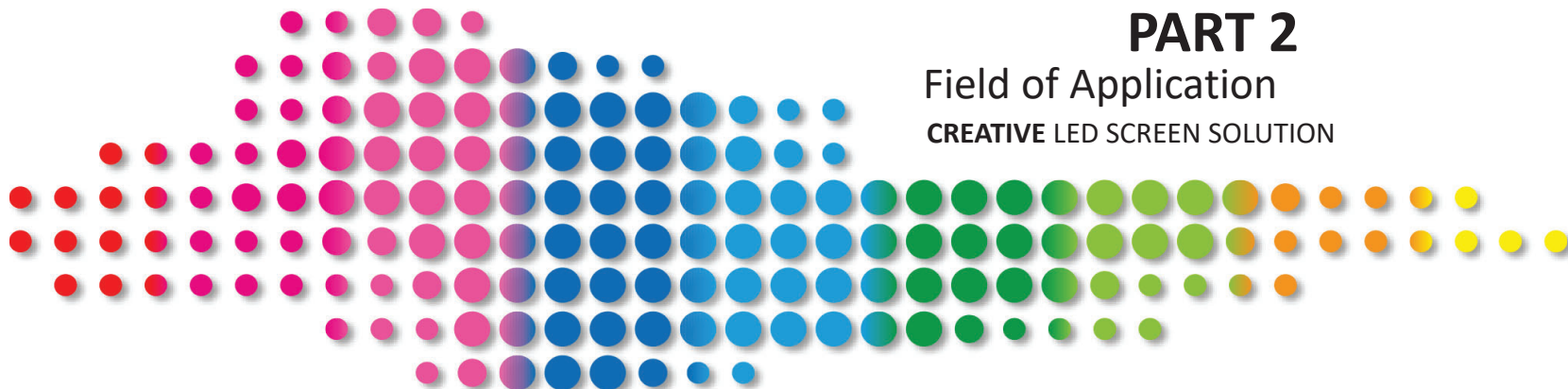
#### **Flex+ series: FLX4/6**

- Settled by magnet sheet;
- No cabinet frame: the module is the display;
- Module size with 320x256mm or 320x320mm;
- Wide view angle;
- Solid rear part and individual control box, supporting fast installation and disassemble.

## PART 2

### Field of Application

CREATIVE LED SCREEN SOLUTION





## Application

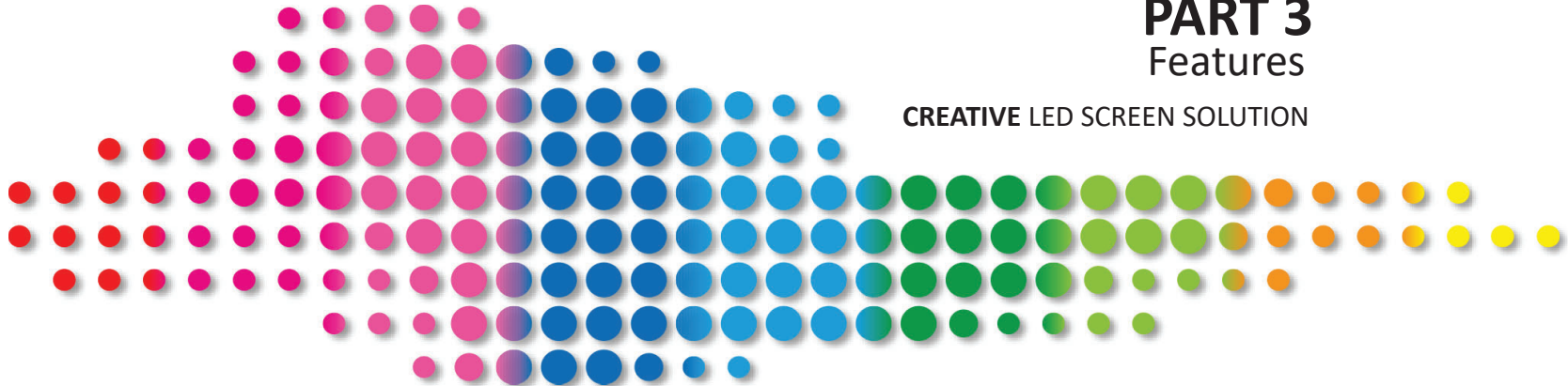
Flex+ series can be widely used in various occasions:  
Stadium, Museums,  
Shopping Center,  
Special Stores, Bars,  
Landscapes,  
Conference hall,  
Concert hall, Exhibition hall, all curved application.



# PART 3

## Features

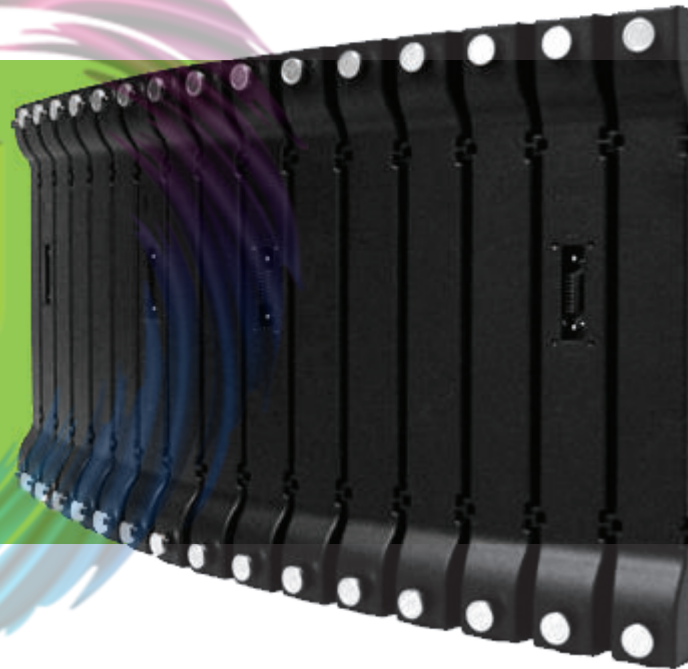
CREATIVE LED SCREEN SOLUTION



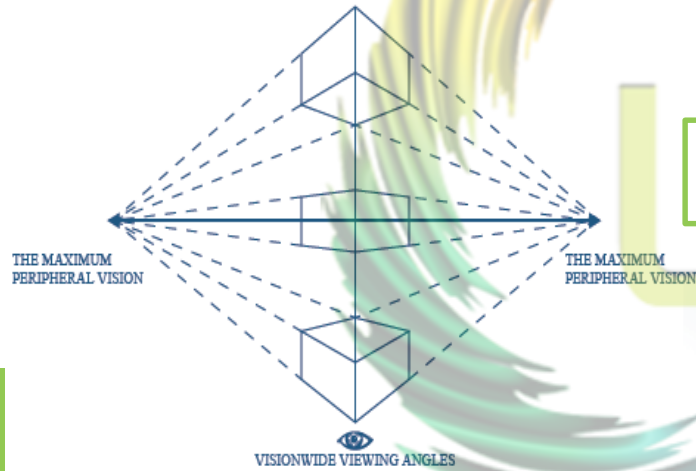


## Beautiful Outlook Design

- Made by PC, Ultra slim and light
- Simple and beautiful
- It can achieve flat, round, concave and convex, perfect from 0° to 360°.



## 3.2•Performance



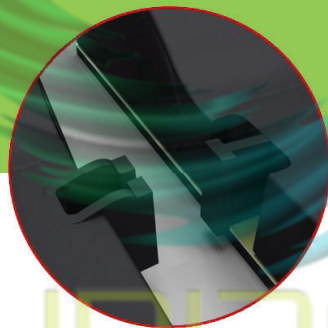
### Wide view angle

160 ° large viewing-angle LED display – perfect for every indoor occasions

## 3.3-Structure

### Ease fit design

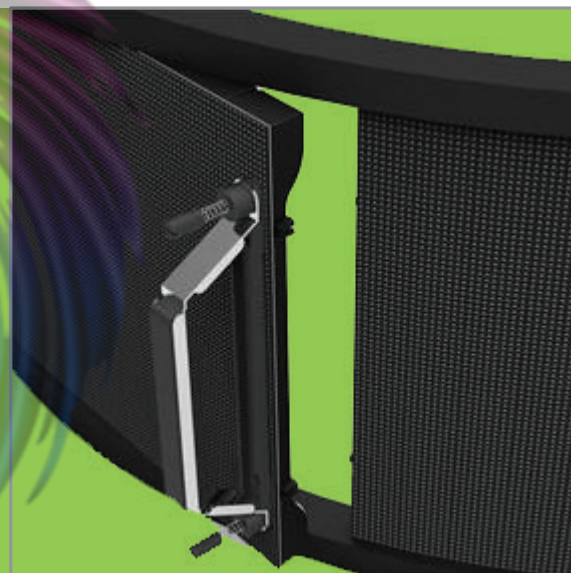
The rear part of the module is easily connected, in order to minimize the gaps when splicing modules.

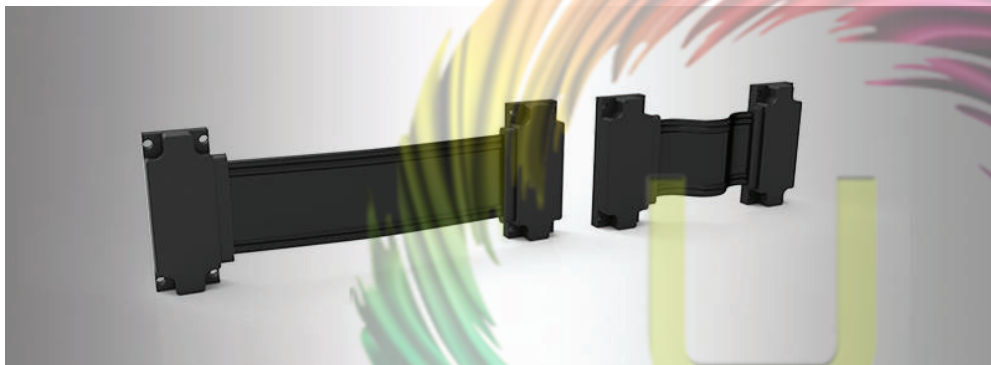




## Maintenance

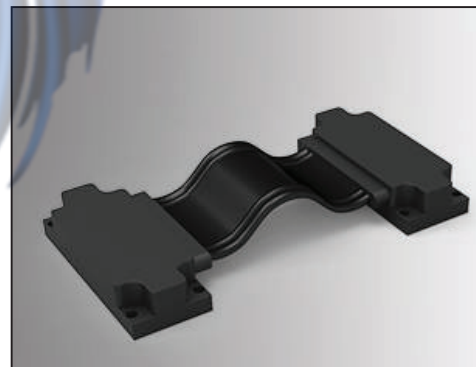
Special maintenance tool  
can loosen two screws at  
the same time in one  
module, efficient and smart.





## Injection cables

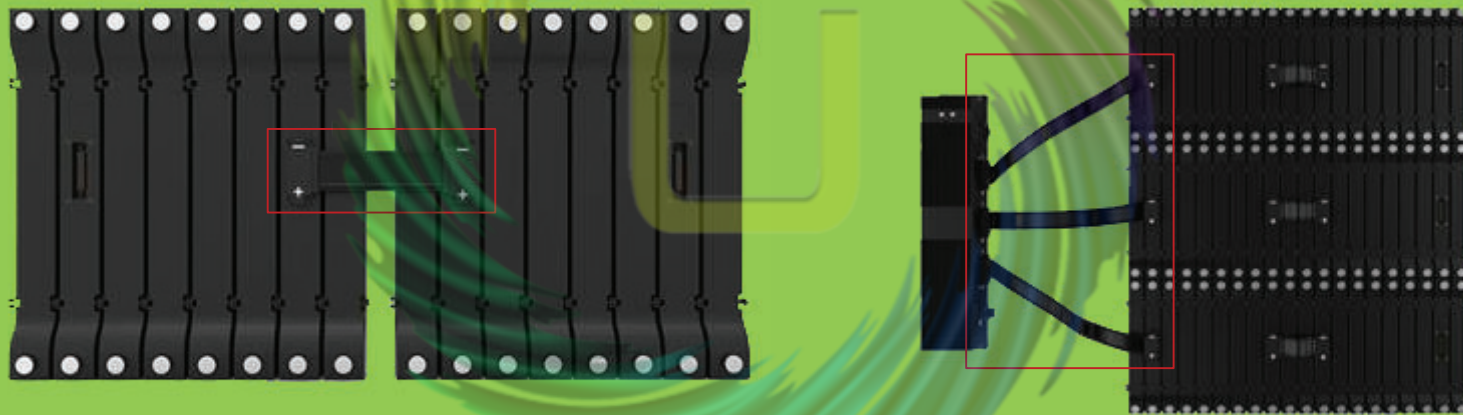
Excellent protection and appearance thanks to the injection cables between the modules and control boxes.



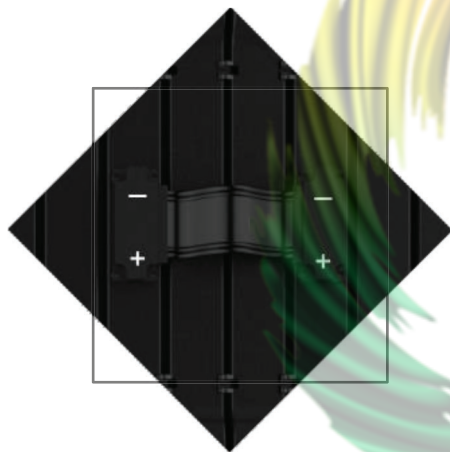


## Assembly Diagram

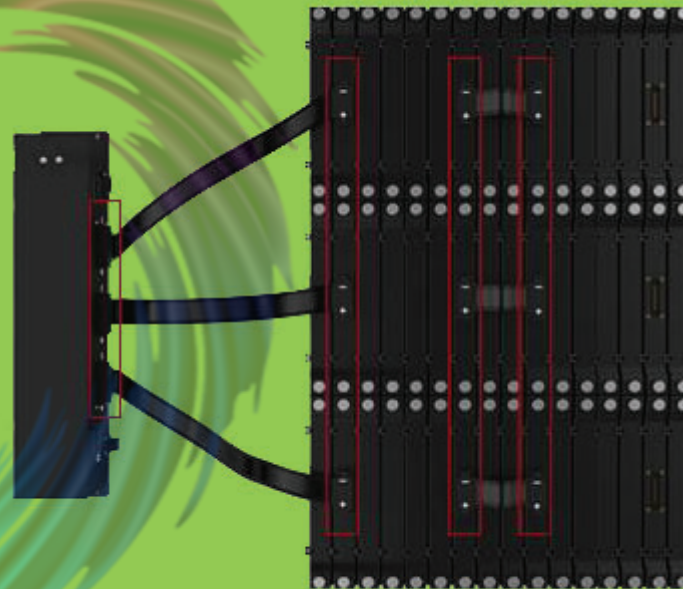
---



# Instructions for flat cables connection

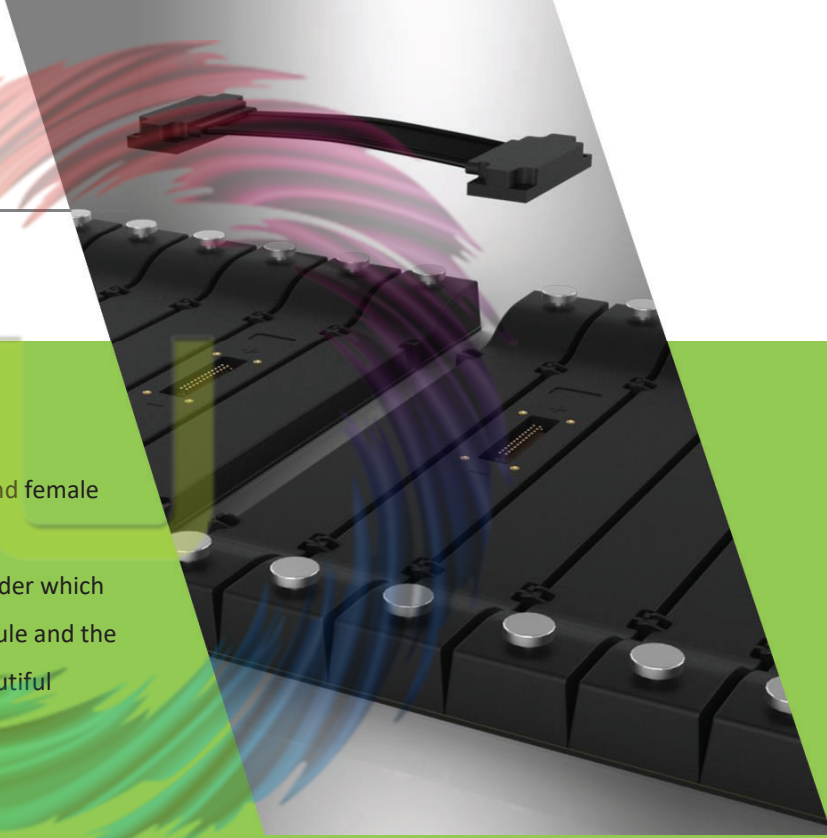


- It's important to pay attention to “+” and “-” and connect them correctly;
- Beware of pins during plugging.

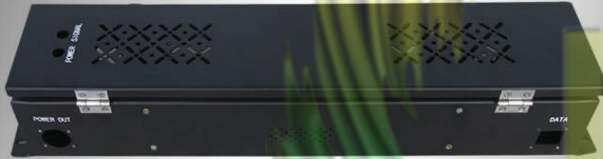


## Male & female header

- Modules and control boxes are all jointed with pin and female header, it's convenient.
- Power and signal are integrated on Pin & female header which are used to connect the modules and connect the module and the control box, thus achieving rapid maintenance and beautiful appearance.



# Integrated control box



One control box can load six WN4 modules

One control box can load nine WN6.6 modules

← **FLX4 control box**

**FLX6 control box** ↓

Receiving cards and power supplies are installed in an integrated control box, which insures the convenient connection between the signal and power cables and makes the maintenance easy and convenient.



## The circle notice

---

- 8 modules can make a minimum circle for FLX4/FLX6;
- 6 or 4 pieces connected in series can achieve a concave or convex screen.



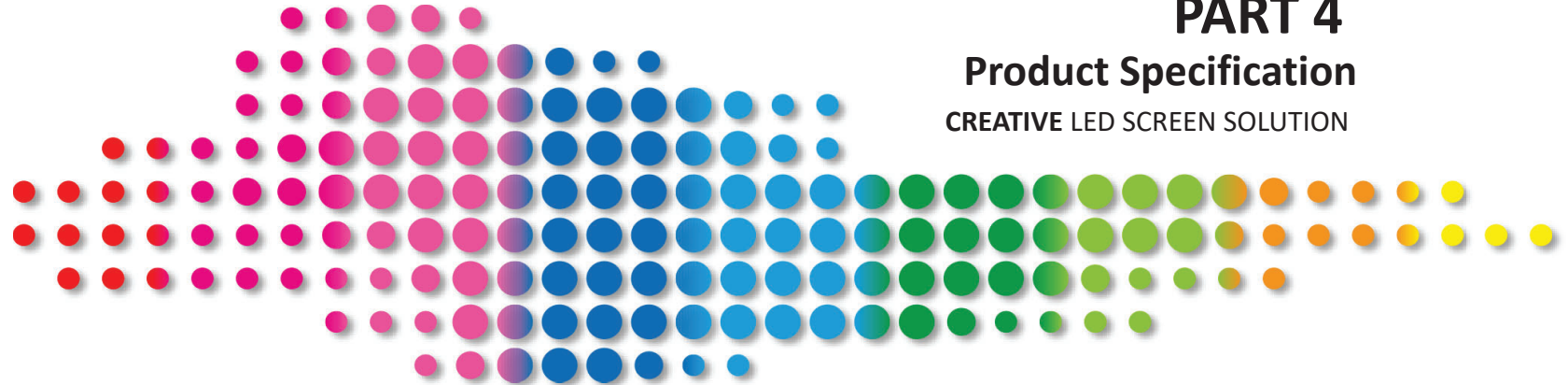


## Strong magnetic sheet

There two rows of magnetic sheets on the top and down side of the module which with strong magnetic attraction.

- Fast installation, firmly and safely
- Easy for module adjustment, which can make a better flatness.
- Convenient for maintenance





## PART 4

### Product Specification

CREATIVE LED SCREEN SOLUTION

	FLX2	FLX3	FLX4	FLX6.6
<b>Physical Parameters</b>	SMD2020	SMD2020	SMD2020	SMD3528
	2.6	3.2	4	6.667
	320x256	320x256	320x256	320x320
	0.85	0.85	0.85	1
	PC	PC	PC	PC
	458.4	458.4	458.4	458.4
	366,5	366,5	366,5	382
	12-16	12-16	12-16	12-16
<b>Electronic Parameters</b>	4096-65536	4096-65536		4096-65536
	> 2040	> 2040	> 2040	> 2040
	1/22 scan	1/22 scan	1/16 scan	1/8 scan
	50/60	50/60	50/60	50/60
	CAT5<100 m	CAT5<100 m	CAT5<100 m	CAT5<100 m
<b>Opto electronic Parameters</b>	800/1000	800/1000	1000	1100
	160°	160°	160°	160°
<b>Electric parameters</b>	100-240	100-240	100-240	100-240
	488 W/m2	488 W/m2	488 W/m2	294 W/m2
	162 W/m2	162 W/m2	162 W/m2	98 W/m2
<b>Environmental parameters</b>	0 C/+45C <sup>(working)</sup>	0 C/+45C <sup>(working)</sup>	0 C/+45C <sup>(working)</sup>	0 C/+45C <sup>(working)</sup>
	-40 C/ +60C <sup>(storage)</sup>	-40 C/ +60C <sup>(storage)</sup>	-40 C/ +60C <sup>(storage)</sup>	-40 C/ +60C <sup>(storage)</sup>
	IP 40 / IP 21	IP 40 / IP 21	IP 40 / IP 21	IP 40 / IP 21
	10%~60% <sup>(working)</sup>	10%~60% <sup>(working)</sup>	10%~60% <sup>(working)</sup>	10%~60% <sup>(working)</sup>
	10%~90% <sup>(storage)</sup>	10%~90% <sup>(storage)</sup>	10%~90% <sup>(storage)</sup>	10%~90% <sup>(storage)</sup>
	100000	100000	100000	100000
<b>Installation</b>	FIX	FIX	FIX	FIX

unitech  
digitalmedia



## Unitech Digital Media srl

Via Achille Grandi, 4 Peschiera  
Borromeo (MI)

(+39) 0818063500  
[info@unitechdigitalmedia.com](mailto:info@unitechdigitalmedia.com)

