

Lamina S+ series Indoor Led Display

Lamina S+ series



Easy Installation



Super-Light



Modular



Wide View Angle



Mixed batch



Dazzle Colors

FEATURES

- Front Emitting
- Seamless right-angle installation.
- Any Size - Any Shape Design TM
- Thin and Light-weight: 47mm, 14kg/m²
- Brightness : 800-1200cd/m²
- Customizable: Freely combined into any size
- Installation: Quick lock, Gap free design
- Flexible splicing of 250x500mm cabinets
- Supports both wall mounting and hanging installations.



Lamina S+ series

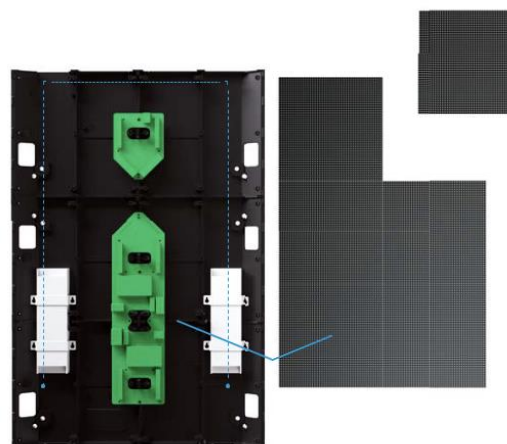
Front



Rear



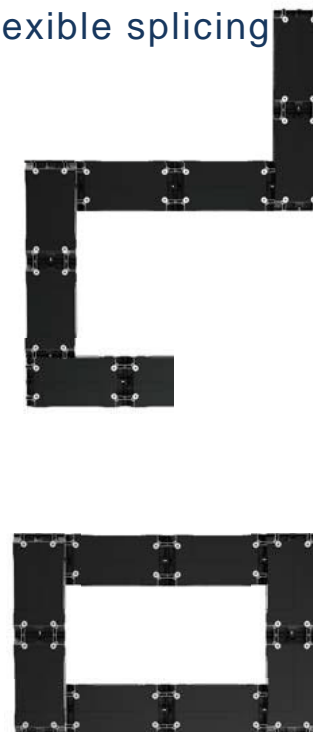
Power & Signal Redudancy



Self Updating
stored color
Coefficient

The module has its
own calibration data
storage, automatically
import the calibration
data when changing
the module

Flexible splicing



LED DISPLAY Lamina S+

SIZE: 500*1000*4.7 / 500*750*4.7 / 500*500*4.7 / 500*250*4.7 / 250*1000*4.7 / 250*750*4.7 / 250*500*4.7 / 250*250*4.7

ORDER CODE: UNILMNS+ | 1.5 / 1.9 / 2.5 / 2.6 / 2.9 / 3.9 | ___CABINET SIZE

Lamina S+ series

Any Size...Any Shape

Variable installation would be available by combination of cabinets in 8 sizes:

500x1000x47mm | 500x750x47mm | 500x500x47mm | 500x250x47mm
250x500x47mm | 250x1000x47mm | 1000x250x47mm | 750x250x47mm

which can perfectly meet the demand of installation diversity.



1250*1750*47mm



750*250*47mm



500*750*47mm



250*1000*47mm



500*1000*47mm

1250*1500*47mm



250*500*47mm



500*500*47mm



250*1000x47mm



500*1000x47mm

1250*1000*47mm



250*1000*47mm



500*1000*47mm

1000*1250*47mm



1000*250*47mm



500*1000*47mm

Lamina S+ series

Ultra-light and ultra-thin

Simple die-cast aluminum frame, anti-extension deformation, high flat seamless stitching



Right Angle
Installation

Flex Splicing of
250mm cabinets

Any Size
Any Shape

Intelligent Mod.
self cal. adapt

Redudancy for
Power and Signal

Total front
Service

Lamina S+ series

Light shadow flow ...smoothly...naturally

800~1200 cd/m²
High brightness

2500 : 1
High contrast

3840Hz
High refresh



Lamina S+ series

Rapid dynamic display

LED has a nanosecond response time, which is very short between lighting and extinguishing, and there is no afterglow effect of fluorescent display technology, therefore, it can quickly respond to image changes with high dynamic clarity, especially for the high demand of dynamic effect restoration, and has great innate advantages. The imaging mode of LED self illumination does not need response time, even in the performance of dynamic picture, there is no lag phenomenon, and the dynamic clarity is naturally higher, which conforms to the psychological perception of human eyes on the impact of motion.



Lamina S+ series

Broadcast level grayscale processing

Gray scale is the so-called color scale or gray scale, which refers to the brightness level, the number of layers of any color changing from dark to light; Led transparent display reaches 16bit gray-scale performance, and the gray-scale performance of the display is still complete under low brightness; the higher the gray-scale level, the higher the image level sense and brightness, and the more details can be displayed, without information loss.



Low gray level display image effect, color block and highlight deadband

Low gray level color difference is obvious

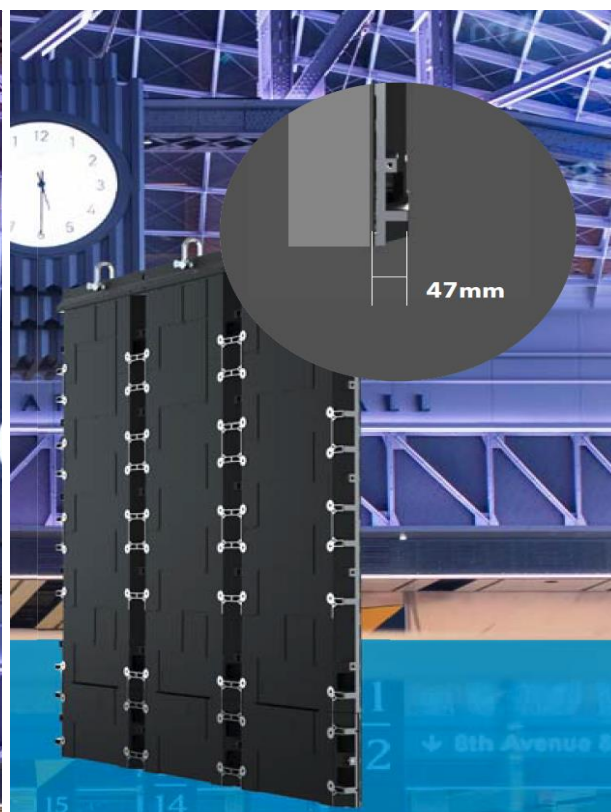
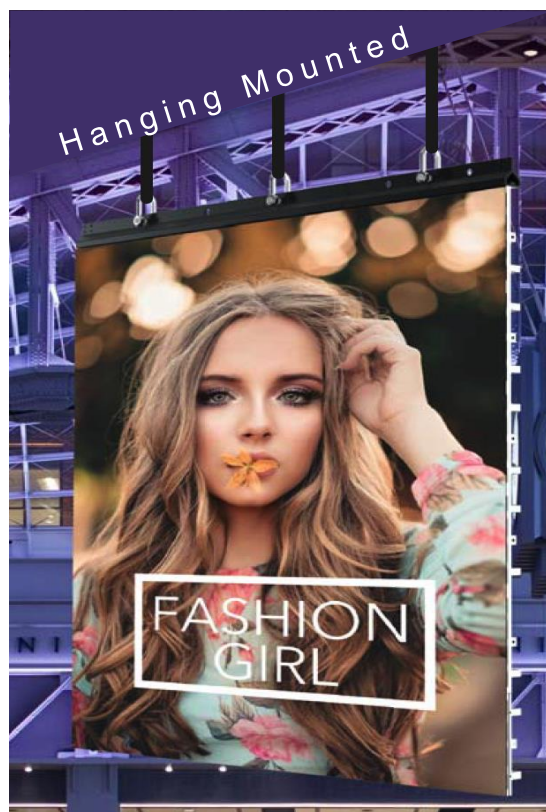


High gray level display image effect, rich color and natural transition

More smooth transition of high gray level color

Lamina S+ series

Installation





Lamina S+ series

	LMNS+1.5	LMNS+1.9	LMNS+2.5	LMNS+2.6	LMNS+2.9	LMNS+3.9
LED	SMD1010	SMD1010	SMD1515	SMD1515/SMD2020	SMD2020	SMD2020
Pixel Pitch	1.56mm	1.95mm	2.5mm	2.604mm	2.97mm	3.91mm
Brightness	800cd/mq	600-800cd/mq	800-1200cd/mq	800-1200cd/mq	800-1200cd/mq	800-1200cd/mq
Module Size	250(W)*250mm(H)	250(W)*250mm(H)	250(W)*250mm(H)	250(W)*250mm(H)	250(W)*250mm(H)	250(W)*250mm(H)
Module Resolution	164dots(W)*164dots(H)	128dots(W)*128dots(H)	100dots(W)*100dots(H)	96dots(W)*96dots(H)	84dots(W)*84dots(H)	64dots(W)*64dots(H)
Refresh Rate	≥2880 HZ	≥3840 HZ	≥3810 HZ	≥3810 HZ	≥3810 HZ	≥3810 HZ
Viewing Angle	140°					
Gray Level	14 Bit					
Cabinet Size	500*1000*4.7 / 500*750*4.7 / 500*500*4.7 / 500*250*4.7 / 250*1000*4.7 / 250*750*4.7 / 250*500*4.7 / 250*250*4.7 (W*H*D mm)					
Cabinet Weight	11.2/8.5/6.5/3.5/6.4/5					
Power Consumption (max/avg)	600/200 W/mq					
Level of Protection	IP20					



Head office

Tel : +39 - 335 -8010444

E-mail : info@unitech.video

Add : Via A. Grandi 4 Peschiera
Borromeo

(Milano) Italy

WEB: <http://www.unitech.video>



Doha Commercial Representative

Contact : Renato Febbraio

E-mail : Renato@unitech.video

Add : P.O. Box 30084 Doha Qatar

+Tel: 974 4441 7005 | +974 5018 8831 | +974 3303 6348

